



ANCHORAGE BUILDING CORPORATION

200 Terrel's Trace, Pittsboro

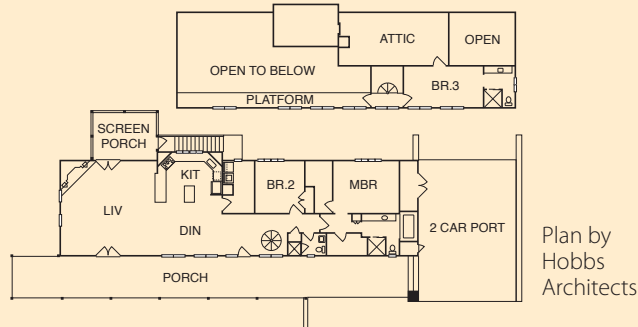
Not for Sale | 2,300 s/f | Sales: 919-928-2664

www.anchoragebuildingcorp.com

MAP# C3 | CHATHAM COUNTY



- GHBT certification in progress
- Icynene® spray foam insulation and superior air sealing package
- Pre-plumbed for solar hot water
- Conditioned attic, with all ducts in conditioned space
- Sealed crawlspace for improved energy efficiency and indoor air quality
- HVAC engineered for optimum performance with dedicated fresh air intake
- Water-conserving fixtures and toilets
- Low-maintenance Hardie exterior with Sherwin-Williams factory pre-finish paint (25 yr. warranty)
- Sherwin-Williams Harmony® no-VOC paint, and low-VOC Earthpaint finishes
- House situated to minimize disturbance and celebrate the sloping lot
- Trex® recycled decking
- Locally harvested and milled tongue-and-groove porch ceilings
- Rinnai® tankless water heater



DIRECTIONS: FROM CHAPEL HILL/DURHAM, from Highway 54 take the Jones Ferry Road exit heading south. Continue on Jones Ferry Road for several miles and turn right onto Crawford Dairy Rd. (Frosty's is on the corner.) Go a few miles and turn left onto Chicken Bridge Rd. (The volunteer fire department is on the corner.) Just past Terrel's Church, turn right onto Terrel's Trace, which is a private gravel road. The house is at the end of the road.

FROM RALEIGH/CARY, take 64 Bypass west to exit #381, which is Highway 87 North. Turn right at the end of the offramp. Go 5.7 miles and turn right onto Chicken Bridge Rd. Go 1.1 miles and turn left onto Terrel's Trace, which is a private gravel road. The house is at the end of the road.



SAGE BUILT

Neighborhood: Chapel Ridge

1105 Golfers View, Pittsboro

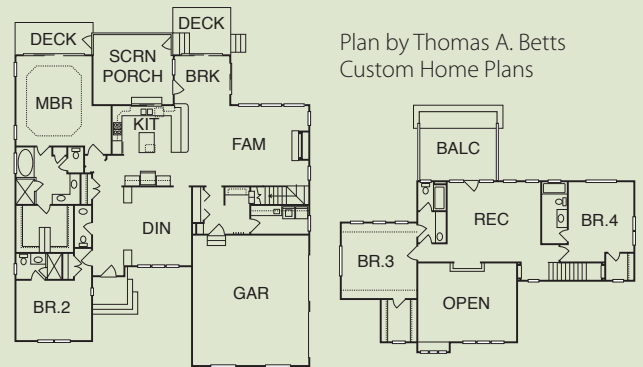
\$600,000 | 3,417 s/f | 919-614-9780

www.sagebuiltnc.com

MAP# C4 | CHATHAM COUNTY



- GHBT certification in progress
- ENERGY STAR® certified
- Sealed crawlspace for improved energy efficiency and indoor air quality
- High-efficiency, insulated Low-E windows
- High-efficiency HVAC system with fresh air intake
- Brick exterior for increased durability and reduced maintenance
- Nu-Wool® engineered cellulose insulation, made from recycled paper
- No-VOC materials for better indoor air quality
- LP TechShield® radiant barrier at roof
- Water-efficient toilets and plumbing fixtures
- Zoned irrigation system with rain sensor and drought-resistant landscaping to promote water conservation
- Tested for airflow leaks to prevent the escape of conditioned air and provide a more comfortable interior living space



DIRECTIONS: FROM CARY, take 64 West towards Pittsboro. Turn right onto Hwy 15-501. Turn left onto Russell Chapel Church Road. Turn right onto Old Graham. Turn left into Chapel Ridge (about 1 mi). Turn left at the sales center. Go to the traffic circle and take the first right out of the circle (onto Golfers View). Home is down the street on the right.

FROM CHAPEL HILL, take Hwy 15-501 towards Pittsboro. Turn right onto Russell Chapel Church Road. Turn right onto Old Graham. Turn left into Chapel Ridge (about 1 mi). Turn left at the sales center. Go to the traffic circle and take the first right out of the circle (onto Golfers View). Home is down the street on the right.