



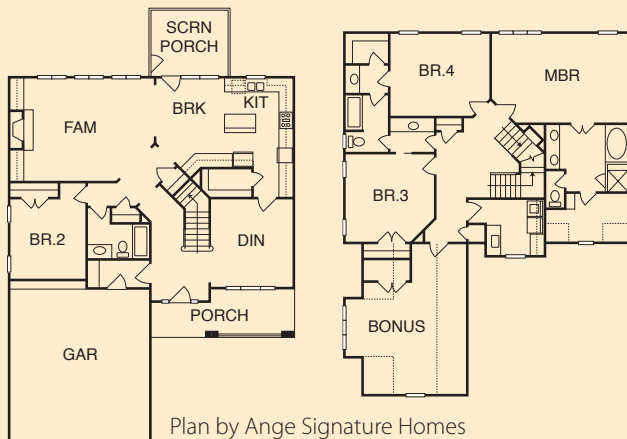
ANGE SIGNATURE HOMES

Neighborhood: Highcroft Village
 4029 Enfield Ridge Drive, Cary
 \$456,000 | 3,013 s/f | Sales: 919-460-1110
 www.angehomes.com

MAP# W6 | WAKE COUNTY



- GGBT certification in progress
- ENERGY STAR® certified home
- Multiple third-party inspections, pre- and post-construction, to ensure energy efficiency
- ENERGY STAR® appliances and recessed lighting
- ENERGY STAR® Low-E, insulated Amerimax Craftsman Portrait windows
- TechShield® radiant barrier roof sheathing system
- Low- or no-VOC paints, caulks, and adhesives
- Sealed, insulated, and conditioned crawl space for improved energy efficiency and indoor air quality
- Eco-friendly maple cabinets
- Native, regionally-appropriate and drought-tolerant trees, vegetation, and turf



DIRECTIONS: FROM I-40, take exit 278 (Highway 55 East). Go approximately 7 miles, then turn right on Green Hope School Road. Turn left on Warner Ridge Lane. Turn Right on Enfield Ridge Drive. House is on the 5th lot on the left.



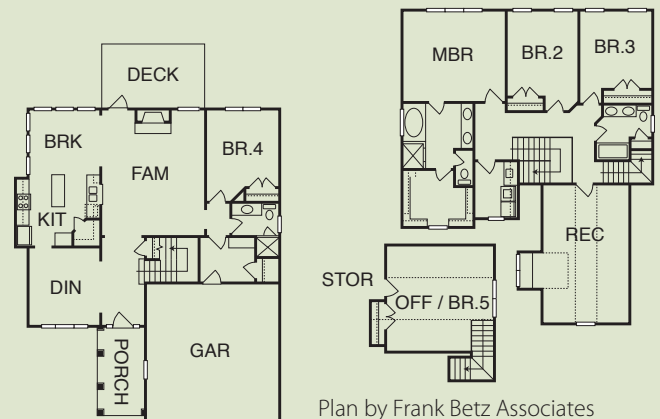
HOMES BY DICKERSON

Neighborhood: Highcroft Village
 6001 Retford Grant Court, Cary
 \$435,000 | 2,958 s/f | Sales: 919-847-4447
 www.homesbydickerson.com

MAP# W7 | WAKE COUNTY



- GGBT certification in progress
- Sealed crawlspace for improved energy efficiency and indoor air quality
- Utilization of advanced framing techniques to reduce waste and increase insulation coverage
- Reflective plywood sheathing on roof
- Durable, "no rot" or rot-resistant exterior materials with properly installed water-resistant barrier beneath siding
- ENERGY STAR® certified
- HVAC equipment properly sized and installed to improve efficiency and reduce duct air leakage
- HVAC air duct leakage and home air infiltration tested by third party (Southern Energy Management)
- Low-flow shower heads and lavatory faucets
- Dual-flush toilets
- Low-VOC paints
- Regionally-appropriate landscaping plants
- House includes ENERGY STAR® rated front load washer, dishwasher, and refrigerator.



DIRECTIONS: FROM I-540, take the exit for Hwy 55. Take Hwy 55 South to Green Hope School Road and turn right. Turn left into Highcroft subdivision on Rockland Ridge Drive. Take the first left onto Retford Grant Court. House is the corner of Rockland Ridge and Retford Grant.