



BUILDSENSE

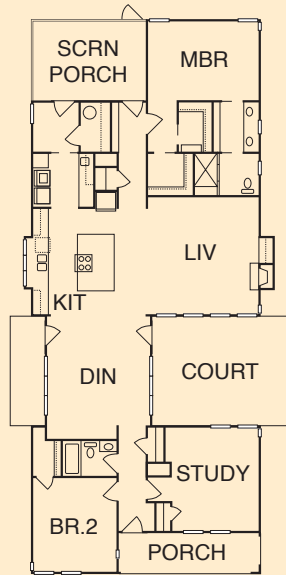
930 W. Markham Ave, Durham

Not for Sale | 2,182 s/f | Sales: 919-667-0404
www.buildsense.com

MAP# D4 | DURHAM COUNTY



- GHBT certification in progress
- Proper solar orientation with ample southern glazing for supplemental heat in the winter and properly sized roof overhangs for shading in the summer
- Butterfly roof for rainwater collection to 1700-gallon underground cistern by Rainwater Solutions
- High-efficiency gas water heater, supplemented by a solar hot water heater by Solar Consultants
- Radiant slab heat for supplemental heating and optimal comfort
- High-efficiency 16 SEER heat pump with fresh air intake and dedicated returns
- Water-conserving fixtures and a plumbing manifold water distribution system
- Icynene® spray foam insulation in roof and spray-in fiberglass “Spider” insulation in walls by FoamWorx
- Low-E, Argon-filled Marvin Integrity doors and windows
- Rainscreen siding system featuring low-maintenance fiber cement and cedar siding; siding is pre-painted in a controlled facility by Talbert Machine Finishing
- Durable, low-maintenance interior finishes with no-VOC paints
- Landscape featuring native and drought-tolerant plantings
- ENERGY STAR® home designed to perform 40% better than code



Plan by Studio B Architecture and Ari Goldstein

DIRECTIONS: FROM RALEIGH, take I-40 to exit 279B (Durham Freeway) and follow for approximately 8 miles to Exit 12C (Duke Street). Take Duke Street north for approximately 1 mile. Turn left on Markham Avenue. The residence is located on the right side at the next intersection (Gregson Street).

FROM CHAPEL HILL/DURHAM, take 15-501 N to I-85 N. Take exit 176 (Gregson Street) and follow Gregson south for 0.7 miles. Take a left on Markham Avenue. The residence is located at the corner of Markham Avenue and Gregson Street.



RED-B CONSTRUCTION (The Green Makeover Home)

Neighborhood: Hope Valley

3411 Dover Road, Durham

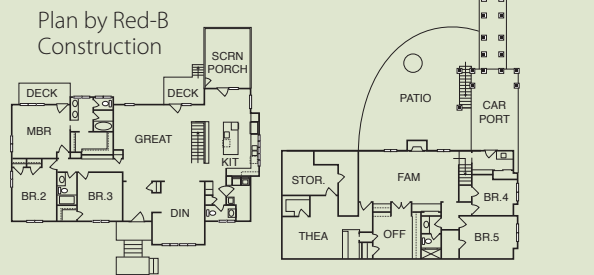
\$1,090,000 | 4,340 s/f | Sales: 919-624-7903

www.red-b.com | www.greenmakeoverhome.com

MAP# D5 | DURHAM COUNTY



- GHBT certification in progress
- Finalist, NAHB 2009 Green Building Awards
- Whole house remodeling project that used reclaimed studs, trim, doors, and stairs
- Salvaged light fixtures, appliances, bath fixtures, fireplaces, windows and cabinets donated to Habitat for Humanity or elsewhere, saving 14 tons of material from the landfill; also reused an additional 50 tons of material
- Customized insulation package includes: spray foam insulation in the sealed and conditioned attic; no-formaldehyde fiberglass batts; and “Spider” blown insulation with sealed and conditioned crawlspace
- Highly-energy-efficient casement windows with south-facing glazing increased by 20x over original home
- Energy-efficient, variable-speed, dual-stage HVAC air handlers with fresh air sources
- Hurricane-salvaged decking; reclaimed stained glass, light fixtures, and plumbing fixtures
- Low- and no-VOC paints, finishes and glues used throughout house
- Rainwater collection system with 1700-gallon cistern for irrigating drought-resistant landscaping
- Active gray-water recovery system for flushing toilets
- ENERGY STAR® home designed to use 70% less energy



DIRECTIONS: FROM I-40 AT DURHAM/CHAPEL HILL, take exit 270 and head north on 15-501 toward Durham. Exit on Martin Luther King (MLK) Blvd. Follow MLK through a couple of stoplights to Old Chapel Hill Rd. Take a right onto Old Chapel Hill Rd. Take the 3rd left onto Dover Road into the Hope Valley Subdivision. House is the 5th on left.