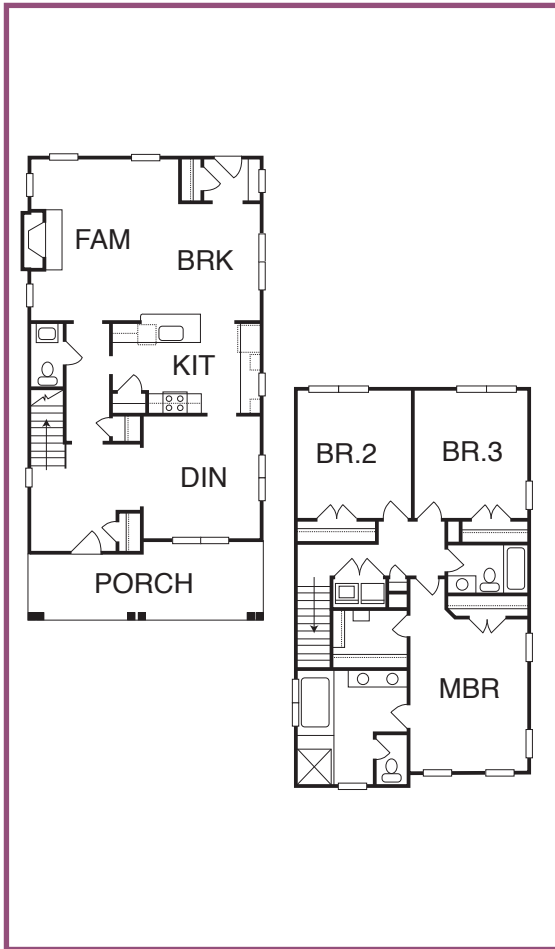


## BYNUM E \$323,216



### MCNEILL BURBANK HOMES

919-781-5225 ■ [www.mcneillburbank.com](http://www.mcneillburbank.com) ■ 2,402 s/f

1152 Great Ridge Parkway, Chapel Hill ■ Briar Chapel

OFFERED BY: MCNEILL BURBANK HOMES, 919-240-5800 ■ HOUSE PLAN BY: MCNEILL BURBANK HOMES



#### FEATURES

- Green Home Builders of the Triangle certification in progress
- ENERGY STAR® certified
- Australian cypress hardwood flooring
- Gas log fireplace with custom built-ins
- Granite countertops with tumbled stone backsplash
- Craftsman style wainscoting in dining room
- Venetian bronze hardware
- Convenient upstairs laundry room
- Oversized screened porch
- Sealed crawl space

#### DIRECTIONS

From Chapel Hill, take 15-501 South toward Pittsboro. Briar Chapel is approximately 7 miles South on the right. Follow Briar Chapel Parkway to the traffic circle. Turn right on Great Ridge Parkway. This home is on the left.