



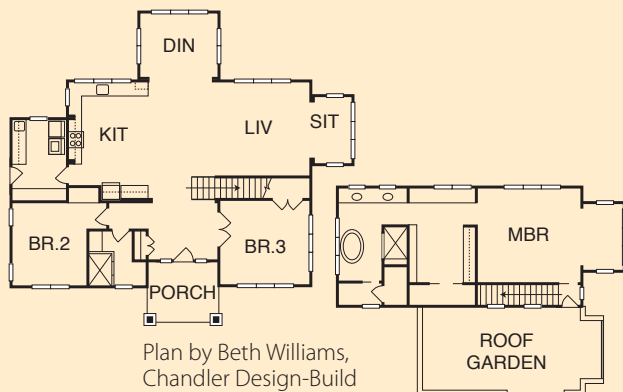
CHANDLER DESIGN BUILD, INC.

Neighborhood: The Duchy
 5039 Duchy Drive, Mebane (near Saxapahaw)
 Not for Sale | 2,515 s/f | Sales: 919-812-7478
 www.chandlerdesignbuild.com

MAP# A1 | ALAMANCE COUNTY



- GHBT certification in progress
- 12" thick, wood-framed double walls table framed offsite by Builders First Source
- 12" thick, R46 "Spider" microfilament fiberglass insulation by Johns Manville in walls
- Roof garden with gas connection for grilling and planters for growing tomatoes away from deer
- Low-maintenance and fire-resistant stucco exterior over Spiderlath rain-screen drainage plane system
- Energy-efficient windows (U -.30, SHGC .30) by Peachtree
- 8" spray foam insulation in ceiling, 2" rigid foam insulation under slab
- Radiant heat concrete floor with solar water heat and natural gas backup
- 9" PolySteel Insulated Concrete Forms used to insulate concrete slab edge
- 190-gallon, three-panel, solar drainback water heating system by Solar H2ot
- 96% efficient Quietside condensing boiler for backup by RoyceTech
- High-efficiency, zoned-bypass air conditioning system; Interactive fresh air system that responds to occupancy
- Projected certifications: GHBT, LEED-H, ENERGY STAR®, Department of Energy Builders Challenge and NAHBGreen Gold level



DIRECTIONS: FROM CARRBORO, take Highway NC 54 west. Continue for 14 miles. Just past the turn off for Saxapahaw, turn right on Thom Rd. Then turn left at Duchy Drive. If the gate is unattended, call 919-812-7478 for access. The house is the first one on the right.



CIMARRON HOMES

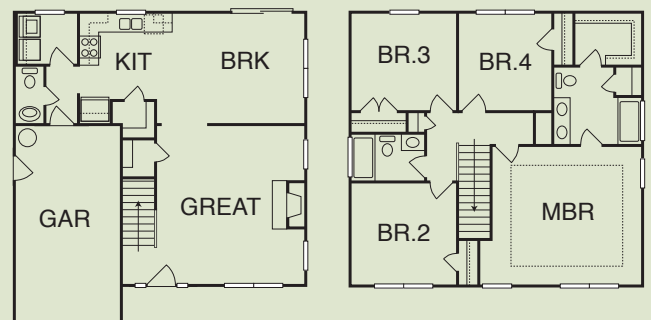
Neighborhood: Panther Creek
 2802 Tulip Poplar Circle, Durham
 \$144,830 | 1,715 s/f | Sales: 919-680-3665
 www.cimarronhomes.com

MAP# D1 | DURHAM COUNTY



See the bones of a green home! This home has been intentionally left unfinished to display green features behind the walls. Join us for a LIVE HVAC Duct Blaster test Saturday, April 25, 1:30 p.m. and Saturday, May 2, 1:30 p.m.

- GHBT certification in progress
- Advanced framing details
- Properly installed insulation
- 14.5 R-value attic access energy blanket
- EPA WaterSense™ approved products by American Standard
- ENERGY STAR® Low-E windows
- Thermal sealing details
- Lakes and walking trails in neighborhood
- LP TechShield® radiant barrier roof sheathing
- Aprilaire® high-efficiency air filter
- Green labeled carpet, certified by the Carpet and Rug Institute, for improved indoor air quality



Plan by Cimarron Homes

DIRECTIONS: FROM I-85 NORTH, take exit 182 (Redmill Road). Turn right and go to the stop sign at the intersection with Geer Street. Turn right on Geer, go ¼ mile and turn left on Burton Road. Continue approximately ½ mile, then turn left on Panther Creek Parkway. Go to the stop sign and turn left on Tulip Poplar Court. The house is 2nd on right.