



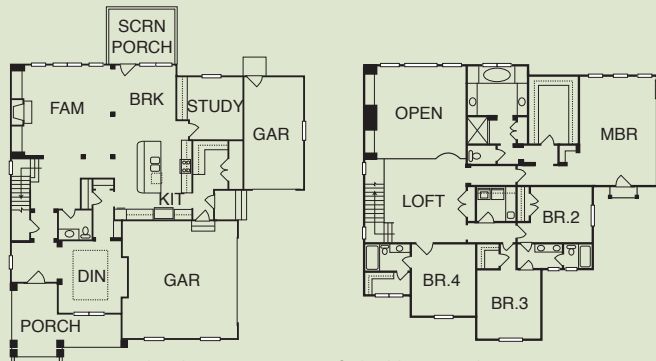
### DANIEL CUSTOM HOMES

Neighborhood: Weston Downs  
 13 Wesleywood Drive, Durham  
 \$524,312 | 3,550 s/f | Sales: 919-730-3058  
[www.danielcustomhomes.com](http://www.danielcustomhomes.com)

**MAP# D6 | DURHAM COUNTY**



- GHBT certification in progress
- ENERGY STAR® certified home
- Closed crawl space for improved energy efficiency and indoor air quality
- Low-E, energy-efficient, no maintenance windows
- HVAC returns in all bedrooms for maximum comfort and even temperature throughout home
- Additional insulation between finished and unfinished spaces
- Air sealing package to reduce infiltration
- Spray foam insulation at bands
- ENERGY STAR® appliances
- Water-efficient faucets and showerheads
- No-VOC paint
- Green carpet and padding
- No maintenance, stamped concrete patio



Plan by Dave Court of Blackline Studios

**DIRECTIONS:** FROM I-40 NEAR CHAPEL HILL, take exit 274 (Hwy 54) towards Chapel Hill. Take the first right onto Farrington Rd. Turn left onto Ephesus Church Road and follow to the traffic circle. Take the first right in the traffic circle onto Pope Rd. Turn right onto Weston Downs Drive and then left onto Wesleywood Drive.



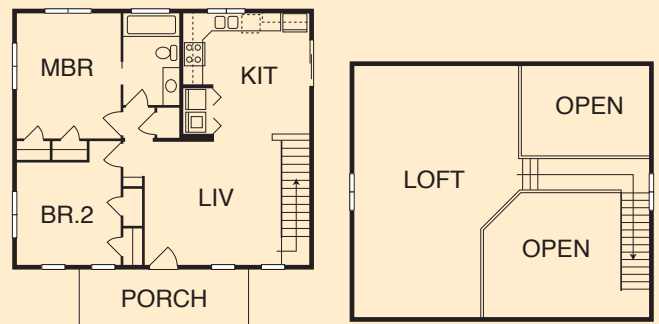
### SUN RIVER BUILDERS SIGNATURE HOMES, INC.

Streets at Southpoint  
 8030 Renaissance Parkway, Durham  
 \$89,900 on your lot | 1,206 s/f | Sales: 919-291-1913  
[www.sunriverbuildersinc.com](http://www.sunriverbuildersinc.com)

**MAP# D7 | DURHAM COUNTY**



- GHBT certification in progress
- 2" x 6" exterior walls with R-19 insulation
- 2" x 12" rafters with R-30 insulation
- Sealed crawl space for moisture control, HVAC efficiency, and health benefits
- ENERGY STAR® HVAC system, dishwasher, CFLs
- Centrally-located electric water heater and insulated hot water pipes
- James Hardie ColorPlus® siding with 15/50 year warranty
- Hardwood floors in kitchen and living room, pre-finished
- Duron low-VOC paint
- Recycled content and recyclable carpet and block
- Low-flow faucets and showerheads, dual-flush toilet (high efficiency toilet)
- Maple cabinets
- Top-quality, low-carbon-footprint, affordable home made possible through experience, intelligent product choices, and efficient design



Plan by Sun River Builders Signature Homes

**DIRECTIONS:** FROM DURHAM, take exit 274 or 276 off I-40. Turn onto Renaissance Parkway toward The Streets at Southpoint shopping center. Home is located by the Main Street mall entrance, between the Bose speakers store and California Pizza Kitchen.