



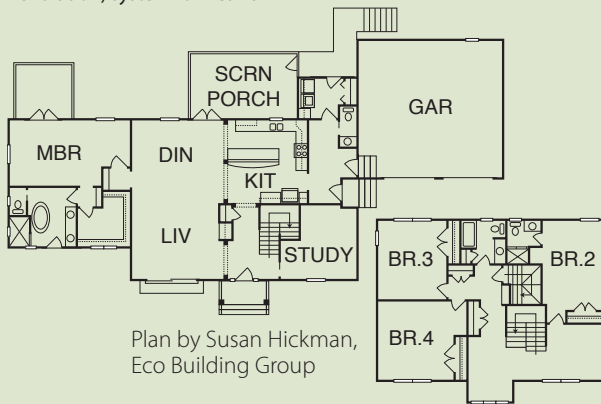
ECO BUILDING GROUP

Neighborhood: Old Stone Crossing
 6105 Lost Valley Road, Raleigh
 \$880,000 | 3,600 s/f | Sales: 919-783-9330
 www.ecobldg.com

MAP# W4 | WAKE COUNTY



- GHBT certification in progress: GHBT Silver level certification projected
- One-of-a-kind setting, 100 yards from Umstead State Park trails; naturally beautiful site, artfully landscaped by renowned garden speaker and author, Pam Beck
- 2" x 6" walls filled with Icynene® spray foam insulation; walk-up attic also sealed with Icynene® spray foam
- Cheap, endless hot water with tankless Rinnai on-demand water heaters
- Grohe WaterCare faucets, dual-flush toilets
- Premium Pella® windows and doors throughout; the home's south-facing windows provide sunlight deep into the house
- No lawn to water or mow; rainwater collection system for drought-proof plant care
- Upgraded lighting design with LED and fluorescent bulbs
- White oak, cork and ceramic tile floors – no carpet
- Fashion-forward, green-certified Bosch appliance package
- Sealed crawlspace to prevent mold; all ductwork in conditioned space
- No-rot exterior with Hardie shakes and MiraTEC trim
- Trane Xli 16 SEER heat pump with 99.9% air filtration; ERV (energy recovery ventilation) system for fresh air



DIRECTIONS: FROM I-40 NEAR RESEARCH TRIANGLE PARK, take I-540 north to Exit 4-A, Highway 70 East. Stay straight on the ramp past Angus Barn, heading toward Raleigh. Travel 2 miles, then turn right onto Ebenezer Church Road. Go 1.5 miles and turn left onto Lost Valley Road.



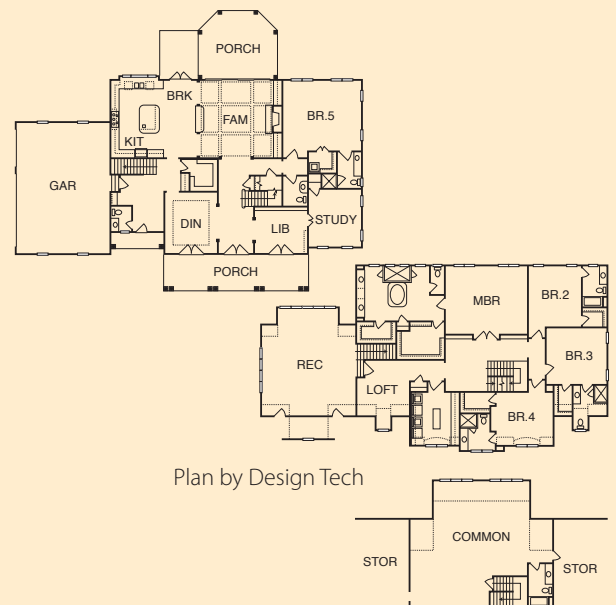
RUFTY HOMES, INC.

Neighborhood: Preston Grande II
 111 Trellingwood Drive, Morrisville
 Not for Sale | 6,812 s/f | 919-460-8550
 www.rufty.com

MAP# W5 | WAKE COUNTY



- GHBT certification in progress
- Holistic "green approach" for entire house – from design to move-in
- ENERGY STAR® certified with third party inspections
- Solar water heater system
- Spray foam insulation and Low-E windows for energy efficiency
- Improved indoor air quality through the features in the following four bullets
 - Low-VOC paint and floor finishes
 - Hardwoods predominate throughout
 - Certified green cabinets and carpet, where used
 - HVAC: Space-Gard® media air filter & air returns in all rooms
- Trees cleared off the lot were recycled
- Low-maintenance exterior and low-flow plumbing fixtures



DIRECTIONS: FROM I-40 IN CARY, take exit 287. Turn south on Harrison Avenue towards Cary. Turn right onto NW Cary Parkway. Take a right onto Rainbrook Dr. Turn left onto Trellingwood Drive.