



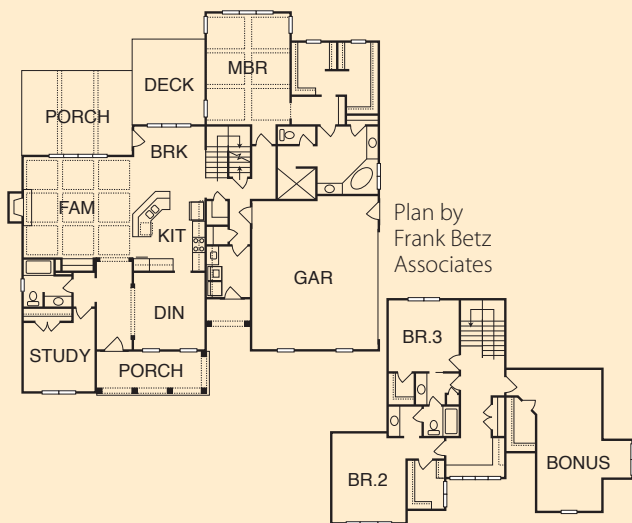
### OLDE HERITAGE BUILDERS

Neighborhood: Wakefield Meadows  
 2625 Winter Storm Road, Zebulon  
 \$499,900 | 3,420 s/f | Sales: 919-269-4555  
 www.oldeheritage.com

**MAP# W2 | WAKE COUNTY**



- GHBT Bronze level certification
- Sealed and conditioned crawlspace for improved energy efficiency and indoor air quality
- ENERGY STAR® home with exceptional HERS® score
- On demand, recirculating hot water
- TechShield® radiant barrier in attic
- Bora-Care® nontoxic termite treatment
- Low- and no-VOC finishes
- Extremely durable exterior materials
- Composite decking
- ENERGY STAR® lighting
- Mechanical fresh air intake
- Recycled materials, including carpets



**DIRECTIONS:** FROM RALEIGH, take Bypass 264/64 East to Hwy 96 (Zebulon exit). Turn left on Hwy 96 N to second stoplight and turn right on PEARCES RD (SR 1001). Go approximately 1 mile to PIPPIN RD and turn right. Go to second entrance to Wakefield Meadows subdivision and turn right on Wakefield Farm Rd. Go to second right and turn onto Winter Storm Rd. House is on the left.



### VANGUARD HOMES, LLC

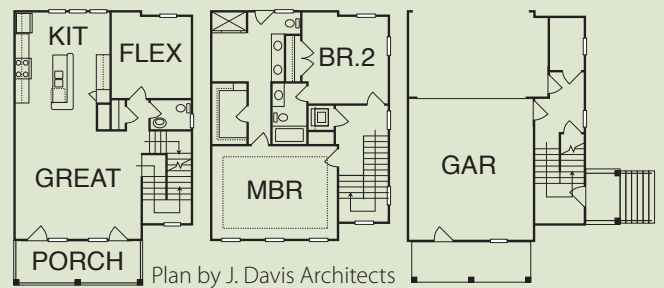
Neighborhood: Blount Street Commons  
 530 John Haywood Way, Ste 104, Raleigh  
 \$438,365 | 1,849 s/f | Sales: 919-671-3005  
 www.vanguardhomesnc.com

**MAP # W3 | WAKE COUNTY**



Home is located on infill site in downtown Raleigh to revitalize an urban area and reduce sprawl. Multiple 3rd party inspections to ensure energy efficiency

- GHBT certification in progress
- Low-VOC paints and adhesives for improved indoor air quality
- ENERGY STAR® qualified appliances and ENERGY STAR® ceiling fans
- WaterSense™ labeled showerheads, faucets, and ultra low-flow toilets
- Tankless gas water heater and insulated hot water lines
- Non-porous quartz kitchen countertops
- MERV 10 air filters and fresh air ventilation for improved indoor air quality
- Locally-manufactured prefinished hardwoods
- Energy-saving compact fluorescent lightbulbs throughout home
- Low-VOC Green Label carpet with recycled content
- Balanced HVAC supply and return ducts for increased comfort
- Low-E windows



**DIRECTIONS:** FROM I-40 NEAR CARY, take the Wade Avenue exit. Proceed on Wade Avenue until you reach the Glenwood Avenue exit. Turn right on Glenwood and proceed to Peace St. Turn left on Peace Street and then turn right on Blount St. Take an immediate left on William Drummond Way. Home is on right at intersection of John Haywood Way.