



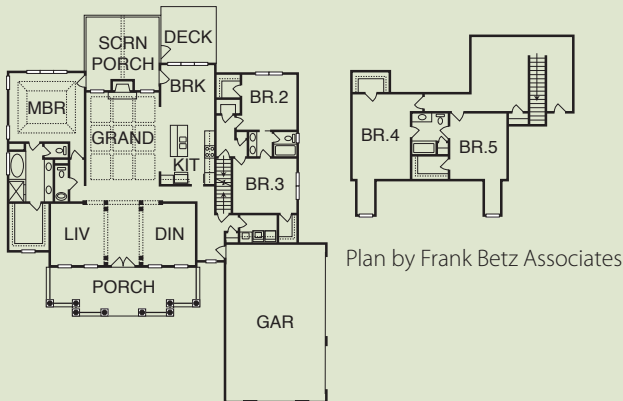
**LEWIS BUILDING COMPANY, LLC**

Neighborhood: Cedar Mountain  
 52 Blue Jay Court, Pittsboro  
 \$550,000 | 3,500 s/f | Sales: 919-260-7747  
 www.lewisbuildingco.com

**MAP# C5 | CHATHAM COUNTY**



- GHBT certification in progress
- Limited turf areas, combined with native vegetation and preservation of natural areas
- ENERGY STAR® rating compliant HVAC system
- Fully-insulated, walk-out-to-daylight, unfinished full basement
- On-demand water heater
- ENERGY STAR® Low-E rated, rot-free windows
- Water-efficient plumbing fixtures
- ENERGY STAR® appliances
- No-VOC indoor paints
- Motion sensors on outdoor lighting
- Insulation surpassing minimum code requirements, tested for leakage by blower door test
- Carbon monoxide detectors
- Sealed ductwork tested by third party



**DIRECTIONS:** FROM CHAPEL HILL, take Highway 54 Bypass to Jones Ferry Road. Follow Jones Ferry Road south into Chatham County. Take a left into the Cedar Grove subdivision on Cedar Grove Road. Follow Cedar Grove Road until it ends, and take a right on Blue Jay Court. Home is the first on the right.  
 FROM CARY, take Highway 64 West to 15-501 North. Turn left off 15/501 onto Hamlet Chapel Road (which becomes Jones Ferry Road). Just past Frosty's, turn right into the Cedar Grove subdivision. Follow Cedar Grove Road into Cedar Mountain until it ends, and then right on Blue Jay Court. Home is the first on the right.



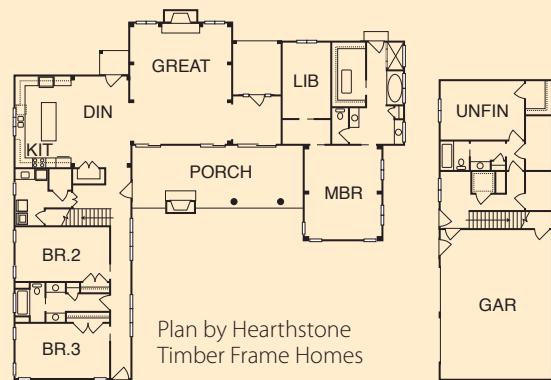
**BROYHILL WILES LOG & TIMBER FRAME BUILDERS**

Neighborhood: Wilkinson Creek Estates  
 436 Wilkinson Creek Lane, Chapel Hill  
 Not for Sale | 4,000 s/f | Sales: 919-306-9959  
 www.broyhillwilesinc.com

**MAP# C6 | CHATHAM COUNTY**



- GHBT certification in progress
- Timber frame house with Pella® Low-E insulated glass for solar efficiency and Structurally Insulated Panels for insulation efficiency
- Superior Walls foundation — pre-cast and pre-insulated basement and sealed crawl space walls
- Sealed crawl space with concrete floor and 4 ft of headroom
- Efficient 14 SEER heat pump with gas backup HVAC system incorporating four zones, multiple speed fans, fresh air intake, humidifier, and electronic air cleaner for good indoor air quality
- Long-lasting, reflective metal roofing with rigid foam roof insulation
- On-demand water heaters near kitchen and master bath
- Resource-efficient, man-made rock around the chimney
- Extended overhangs for enhanced energy efficiency and reduced sun and water exposure
- Rigid, spray foam insulation for sealing and structural support
- Fast-growing, locally- and sustainably-harvested, white pine timbers
- Dual wood-burning fireplaces for inexpensive and renewable fuel
- Age-in-place design with future elevator expansion and two-level driveway access



**DIRECTIONS:** Exit onto Jones Ferry Road from Highway 54 in Chapel Hill. Go west on Jones Ferry Road for 2 mi, take a left on Damascus Church Road. Go 2 mi, take a right on Meachum Road. Go 2 mi, take a right on Gilmore Road. Go 1.2 mi and take a right on Wilkinson Creek Lane. Driveway is on the right with a construction sign designating the entrance. SPEED LIMIT 20 MPH.