



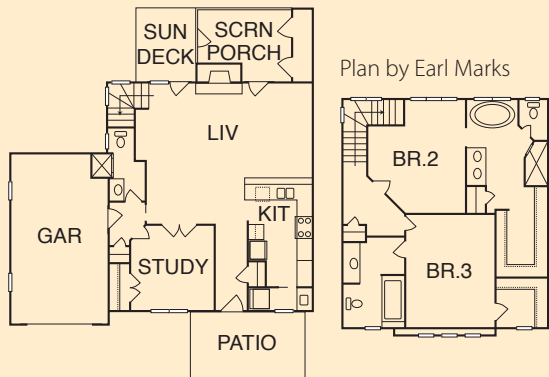
### PICKETT LAND & BUILDING COMPANY

Neighborhood: Townside Terrace  
 511 Hillsborough Street, Unit 101, Chapel Hill  
 \$499,000 | 1,795 s/f | Sales: 919-428-1181  
 www.pickettbuilding.com

**MAP# 02 | ORANGE COUNTY**



- GHBT certification in progress
- Sealed and conditioned crawl space to improve moisture control and reduce energy use
- No-VOC paints — durable, low-odor, anti-microbial paints formulated without silica
- Green Label carpeting — independently verified to give off low emissions of VOCs for improved indoor air quality
- Double-paned, Low-E windows which reduce energy loss and also block damaging ultraviolet sunlight, protecting the carpeting and furnishings
- ENERGY STAR® 14 SEER Lennox HVAC system designed for reduced energy use and increased comfort
- ENERGY STAR® appliances that use 10–50% less energy and water
- Drought-resistant landscaping with native plants that require little or no irrigation or fertilization once established
- Drip irrigation that minimizes water use by delivering it directly to the roots
- Highly-efficient, Rinnai tankless water heater that provides hot water on demand
- Spray foam insulation with air sealing upgrades that result in energy savings, sound protection, and more even temperatures



**DIRECTIONS:** FROM I-40, take the exit for Martin Luther King Blvd (Old Airport Rd.) toward Chapel Hill. Turn left onto Hillsborough St. Continue up Hillsborough Street approximately 1/2 mile and find Townside Terrace Condominiums on the left hand side. Follow signage from entrance. The building is on the left.

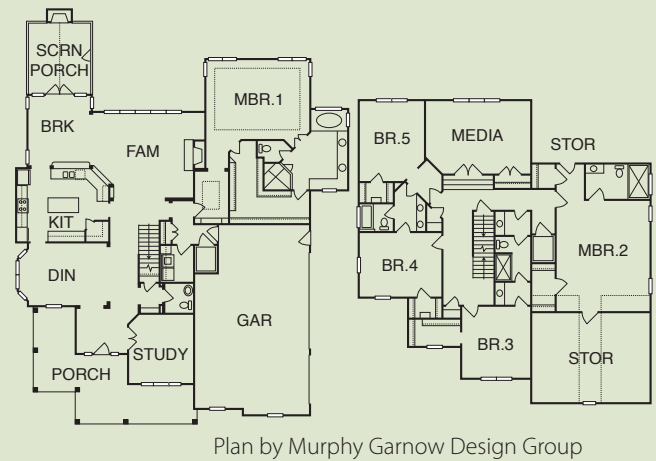
### HAMPTON GREEN HOMES, LLC

Neighborhood: Chancellor's View  
 111 Founder's Ridge Drive, Chapel Hill  
 \$1,198,000 | 4,450 s/f | Sales: 919-602-7313  
 www.hamptongreenhomes.com

**MAP# 03 | ORANGE COUNTY**



- GHBT Bronze level certification
- ENERGY STAR® home
- Solar hot water heater and landscape lights
- TechShield® radiant barrier roof
- Sealed crawlspace for increased energy efficiency and better indoor air quality
- Water-saving plumbing features, dual-flush toilets, and rain barrels
- High-efficiency lighting and CFLs
- Central vacuum for better indoor air quality
- High-efficiency HVAC and air filters
- Low-VOC paints



**DIRECTIONS:** FROM I-40 IN CHAPEL HILL, take Exit 273 and follow Hwy 54 West for 3 miles toward Chapel Hill. Go under an overpass and immediately turn right on NC 54 West/15-501 South bypass. Stay on bypass 2.2 miles and exit at the Chapel Hill-Pittsboro exit. Turn left onto US 15-501 South. Travel one block and turn left onto Mt. Carmel Church Rd. Travel 0.5 mi and turn right onto Old Lystra Rd. Travel 2 blocks and turn right onto Zapata Lane. Turn right onto Founder's Ridge Rd. This home is two blocks on the left.