



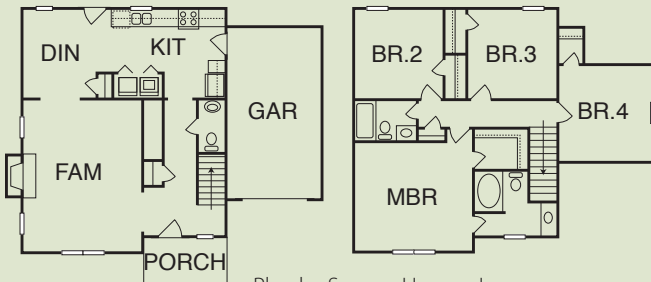
SAWYER HOMES, INC.

Neighborhood: Mangum Farms
 203 Richmond Run, Stem
 \$174,900 | 1,716 s/f | Sales: 919-528-5000
 www.sawyer-homes.com

MAP# G1 | GRANVILLE COUNTY



- GHBT certification in progress
- ENERGY STAR® certified to be at least 15% more efficient than the building code
- 5% monthly power discount from Progress Energy
- High-efficiency, 15 SEER heat pump
- Low-VOC paints and sealants for improved air quality
- Products made from renewable resources used where possible
- Home sited to optimize solar resources
- Sealed and conditioned crawl space to increase energy efficiency and air quality
- Water-efficient shower heads and faucets
- Advanced framing techniques to reduce waste and increase insulation coverage
- Construction material recycling program to minimize waste sent to landfills
- Drought-resistant landscaping
- Green labeled carpet certified by the Carpet & Rug Institute



Plan by Sawyer Homes, Inc.

DIRECTIONS: FROM DURHAM, take I-85 North towards Creedmoor to Exit 191. Turn left onto Highway 56. Travel 0.5 miles to 33rd Street (second stop light). Turn right. Travel 2.1 miles through the school area. Turn right onto Old Route 75. Travel 2.2 miles. Entrance to Mangum Farms will be on the right.



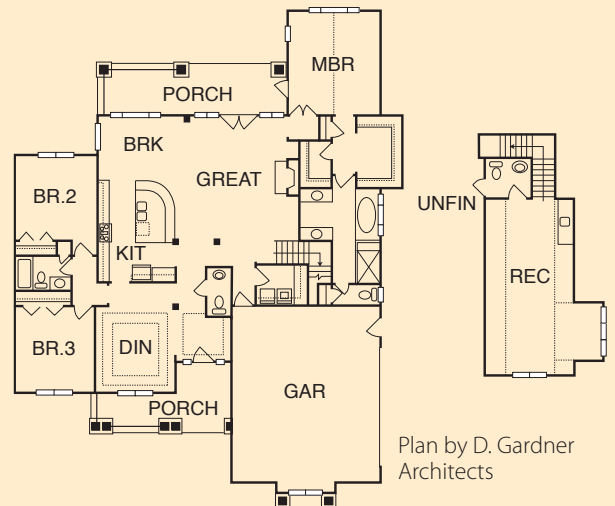
OLDE HERITAGE BUILDERS

Neighborhood: Wakefield Meadows
 2624 Winter Storm Road, Zebulon
 \$434,900 | 2,822 s/f | Sales: 919-269-4555
 www.oldeheritage.com

MAP# W1 | WAKE COUNTY



- GHBT Bronze level certification
- Sealed and conditioned crawlspace for improved energy efficiency and indoor air quality
- ENERGY STAR® home with exceptional HERS® score
- Solar hot water in place
- TechShield® radiant barrier in attic
- Drip irrigation with rain barrel
- Low- and no-VOC finishes for improved indoor air quality
- Extremely durable exterior materials
- Composite decking
- ENERGY STAR® lighting
- Mechanical fresh air intake
- Recycled materials, including carpets



Plan by D. Gardner Architects

DIRECTIONS: FROM RALEIGH, take Bypass 264/64 East to Hwy 96 (Zebulon exit). Turn left on Hwy 96 N to second stoplight and turn right on Pearce Rd (SR 1001). Go approximately 1 mile to Pippin Rd and turn right. Go to second entrance to Wakefield Meadows subdivision and turn right on Wakefield Farm Rd. Go to second right and turn onto Winter Storm Rd. House is on the right.